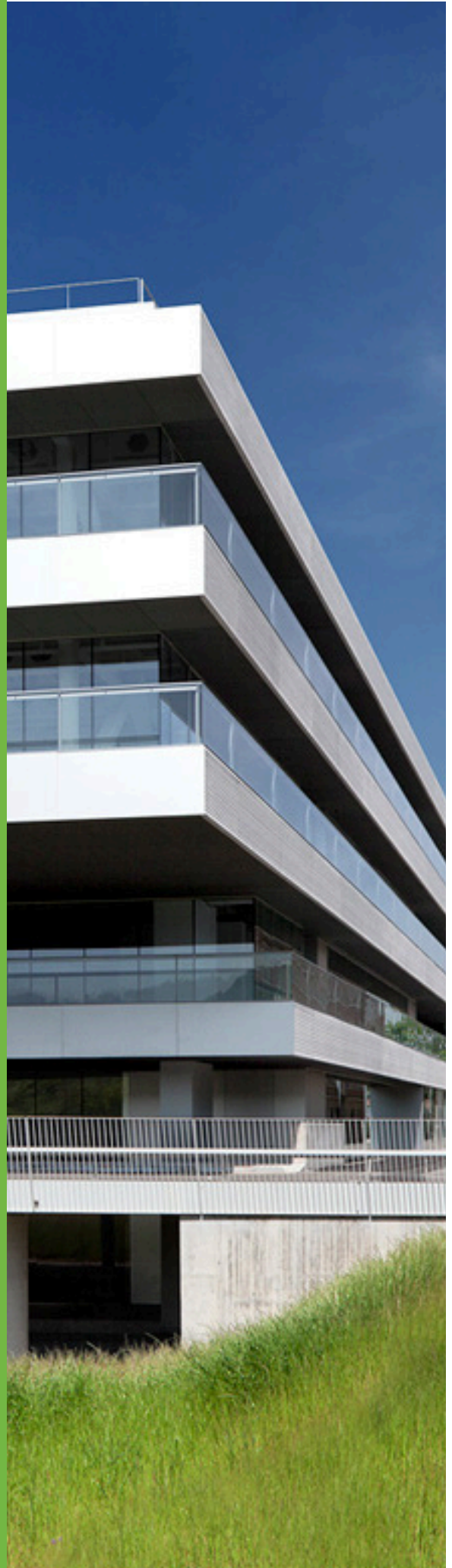




180Degrees  
CONSULTING  
—BARCELONA—

# Annual Report

2025-2026



# TABLE OF CONTENTS

- 01** About Us
- 02** Human Resources Department
- 03** Events Department
- 04** Strategic Relations Department
- 05** Consulting Department
- 06** Analytics Department
- 07** Marketing Department
- 08** Finance & Legal Department
- 09** Shaping Tomorrow



01

# ABOUT US



180Degrees  
CONSULTING  
—BARCELONA—

# About Us

180 Degrees Consulting is the **world's largest student-run organisation**, built around two core aims: empowering **socially conscious organisations** and shaping the next generation of **social impact leaders**. We connect passionate university students with non-profits, social enterprises, and mission-driven organisations to help them **create meaningful change in their communities**.



180 Degrees Consulting operates through more than 200 branches spanning nearly 40 countries, providing high-quality consulting at accessible rates to organisations that would otherwise struggle to afford strategic guidance.

In every engagement, student consultants work closely with clients to address real challenges and develop solutions for real-world use. The result is a meaningful impact for the organisations served, while members build the skills and confidence needed to pursue purpose-driven careers.

# Our Mission

To enable non-profits and social enterprises to foster their development.

180DC Barcelona is committed to delivering cost-effective, professional, strategic, and operational support, empowering clients to drive lasting change in their communities.

Social enterprises and non-profits often lack access to affordable and effective strategic consultancy. 180DC exists to bridge that gap, ensuring that limited resources never stand in the way of meaningful social and business development.

Alongside this goal, we commit to nurturing the next generation of social impact leaders by equipping our consultants with hands-on experience and growth opportunities in social entrepreneurship.

To achieve this, we recruit and teach the best students from Esade each semester to work on consulting projects for organisations with a clear objective. Teams of three to five consultants work closely with each client to create customised, long-lasting solutions in areas including marketing, operations, strategy, and social impact assessment.



For our clients, we offer expert, affordable consultation that improves their operations, strategy, and ability to bring about long-lasting change in their communities.

For our consultants, we provide practical experience working with actual organisations, developing leadership, teamwork, and problem-solving abilities while fostering a deeper comprehension of the social sector.





180Degrees  
CONSULTING  
—BARCELONA—

# Our Vision

By connecting the talent of top university students with organisations working to improve their communities, 180DC bridges the gap between ambition and impact, turning challenges into opportunities and ideas into measurable change.

Our vision is a global ecosystem where the next generation of leaders and the organisations they serve grow together, creating a more equitable and sustainable world.



1

#### **Using business as a force for good**

180DC prioritizes impactful and productive problem-solving skills over profit-driven goals.

2

#### **Prioritising innovative solutions**

180DC focuses on finding innovative and sustainable solutions that address the root causes of underlying social issues.

3

#### **Turning ideas into reality**

180DC strives to turn ideas and aspirations into tangible, measurable outcomes that create real impact.

4

#### **Shaping challenges into opportunities**

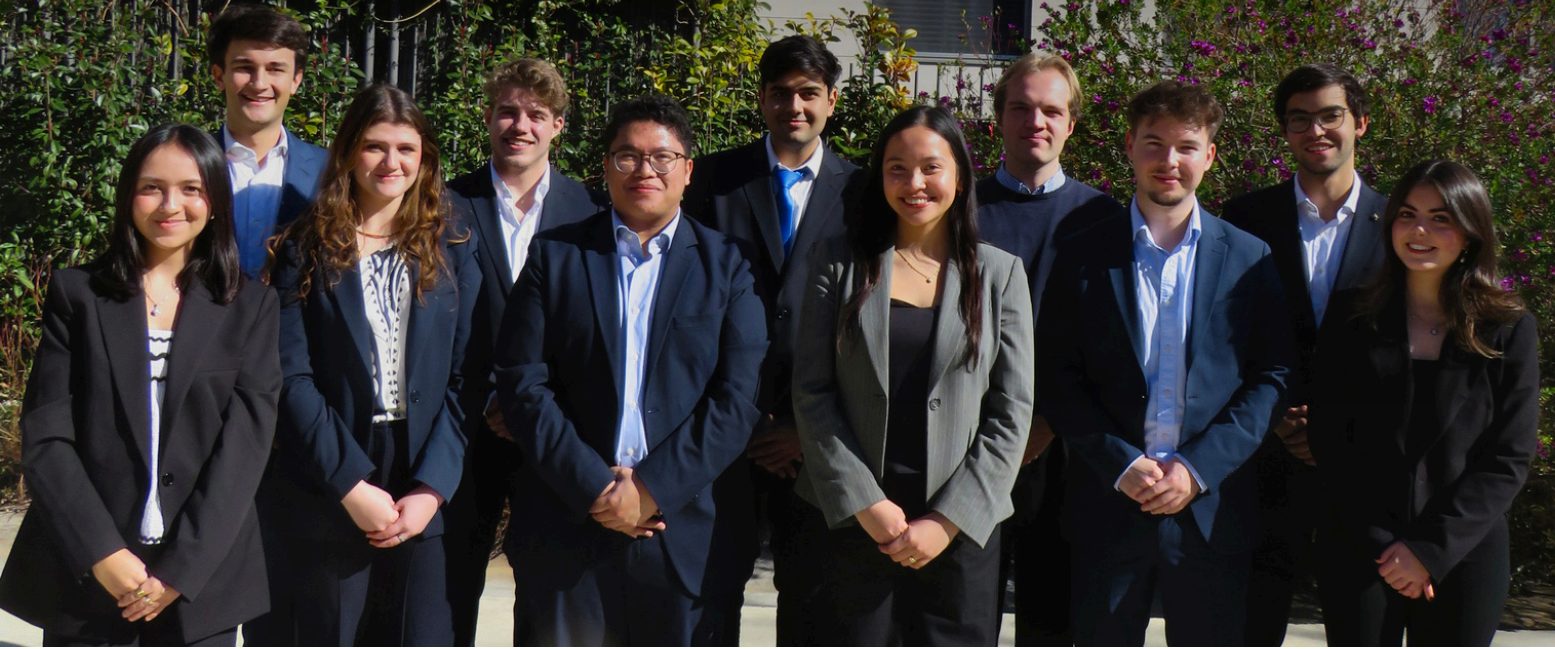
180DC views challenges as opportunities for growth and learning, approaching each one with a solutions-focused mindset.

5

#### **Promoting positive transformation**

180DC is committed to creating positive change and transforming organisations and individuals for the better.

# Board of Directors



**Denise Muller**  
Co-President



**Jerico Agdan**  
Co-President



**Federico Borgio**  
Consulting Director



**Joaquin Mojica**  
Consulting Director



**Paul Piletzky**  
Consulting Director



**Jan Sternberg**  
Analytics Director



**Simon Bahno**  
Strategic  
Relations Director



**Irune Becker**  
Strategic  
Relations Director



**Krish Mohanani**  
Finance &  
Legal Director



**Antonia Tascón**  
Events Director



**Ana Jaimes**  
Marketing Director



**Thais Ellmann**  
HR Director



**V. Oppedisano**  
Board Advisor



**Alexandra Liang**  
Board Advisor

# Letter from the Presidents

As we close the academic year, we are proud to present the first Annual Report from our branch. This year was defined not only by our strengthening impact and growing community, but also by our unwavering belief in what student-led initiatives can achieve.

This year, our teams delivered 24 projects for impact-driven organizations across six countries: Spain, Switzerland, the Czech Republic, Germany, South Africa, and Uganda. From strategy to expansion, partnerships, fundraising, and operations, our consultants helped tackle some of their most complex challenges, working to create meaningful change in their communities. These achievements were driven by over 70 members across Bachelor's and Master's programs at Esade, selected from more than 300 applicants. Their hard work, rigor, and commitment to social impact shaped the quality of work we delivered to every client, and we could not be prouder of what they built this year.

Beyond our client work, we invested heavily in building a stronger 180DC ecosystem in Barcelona and beyond. We launched the first-ever Barcelona Case Competition, our new flagship event, bringing together students from seven universities to solve a real startup challenge in front of Deloitte judges. We also deepened our international network through a visit to the 180DC Milan branch, which included a workshop with MBB consultants. Finally, we strengthened our regional community by hosting the Latin Europe Summit with the Global Leadership Team, inviting the UPF, ESCP, and Turin branches to our campus.

To our clients: thank you for trusting us with challenges that matter.

To our sponsors and partners: thank you for your belief in student-led impact.

To our members: thank you for your dedication, leadership, and commitment to excellence and meaningful work.

Finally, we extend a warm welcome to the new Board.

We look forward to seeing how you strengthen our impact and continue building the next generation of leaders who believe business can be a force for good.



With gratitude,  
Jerico Agdan and Denise Muller  
Co-Presidents, 180DC Barcelona



02

**HUMAN  
RESOURCES  
DEPARTMENT**

# Human Resources

This year, HR prioritized member onboarding and engagement through internal initiatives and events. This included organizing kickoff events at the start of each term and teambuilding activities throughout the year. The goal was to increase team cohesion, communication, and the association's overall culture. These measures had positive engagement outcomes, with steady attendance and active participation.

During the first term, HR hosted a kickoff session for the organisation. We welcomed new members, explained the association's goals and structure, and provided basic training for consultants. The kickoff also featured a professional photoshoot intended for internal and public use. Moreover, an informal integration event was planned at a local establishment in the center of Barcelona. This facilitated more informal interaction, team bonding, and better relationships between members. We also held a dinner for the Board of Directors to continue building connections within the leadership team.

During the second term, a second kickoff event was held. This event was again aimed at welcoming new members, clarifying expectations, and introducing projects. Additionally, we held another board dinner and informal gathering with all members to strengthen alignment and cohesion within the team, fostering stronger collaboration and communication at both the management and organizational levels.

Finally, the HR team introduced a new initiative, the Consultant of the Month Awards. Every month, each Director submitted the names of the Associate or Consultant who showed exceptional skill, effort, and dedication in their roles during that time period. The award recipients were each given a personalised certificate signed by the Co-Presidents as a symbol of gratitude for their work in the association.



**Thais Ellmann**  
HR Director



**Giovanni Donato**  
HR Associate

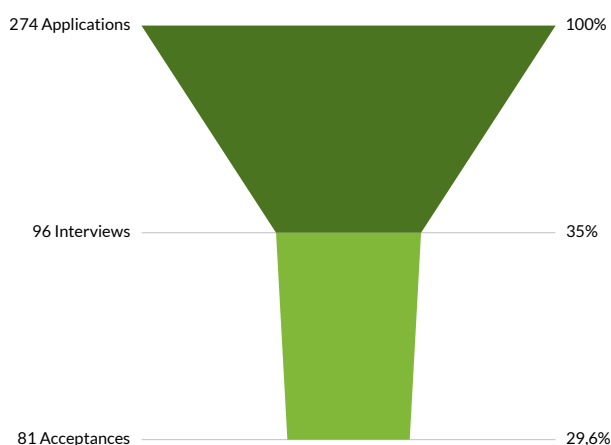


**Lorena Erenstein**  
HR Associate

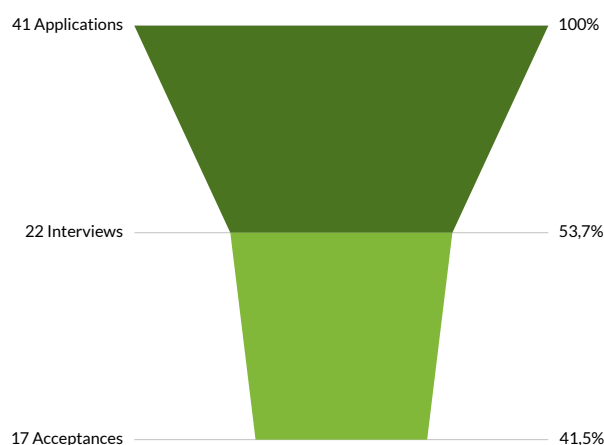
# Human Resources

During this past year, 180DC Barcelona led two recruitment cycles, with one at the start of each semester. We have reached a record number of applicants overall, showing our growing impact and reach within Esade.

## Term 1



## Term 2



*These metrics represent applications for all roles, including Directors, Associates, and Consultants.*

We are proud to have built a community of diverse backgrounds, representing many nationalities and degrees across Esade’s undergraduate and graduate schools.

# +20

nationalities represented

# 49%

bachelor’s students

# 51%

master’s students

# 10

bachelor’s and master’s degrees

- Business Administration (BBA)
- BBA and Artificial Intelligence
- BBA and Law
- Global Governance, Economics and Legal Order
- Transformational Leadership and Social Impact
- International Management
- Finance
- Business Analytics
- Sustainability
- Innovation and Entrepreneurship



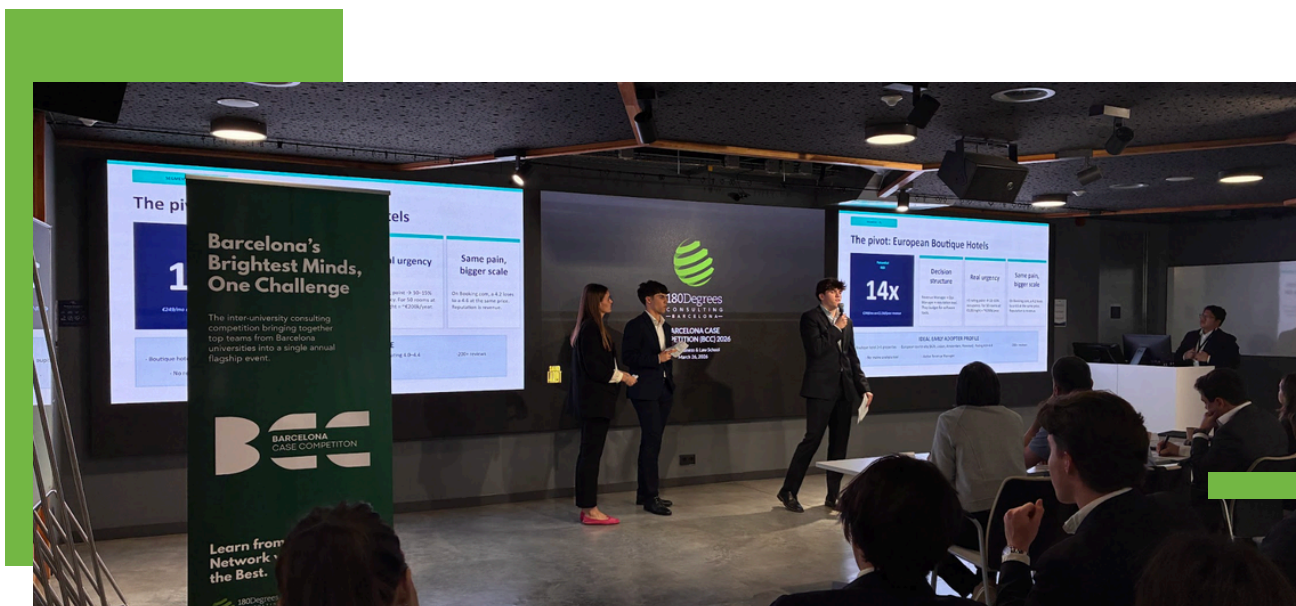
03

**EVENTS  
DEPARTMENT**



180Degrees  
CONSULTING  
—BARCELONA—

# Events Department



**8  
Events  
Organized**

Main events involved company networkings and case competitions



**20  
Professional  
Speakers**

Industry experts were invited to share valuable insights



**220+  
Participants  
across Events**

Events were attended by both Esade and external students



**2  
Company  
Sponsorships**

Our flagship BCC event had a company sponsor for food and beverages



**Antonia Tascon**  
Events Director



**Aliae Derouiche**  
Events Associate



**Camille Monsef**  
Events Associate



**Stefan Vasilescu**  
Events Associate

## Events



### 01. Beach Clean-Up

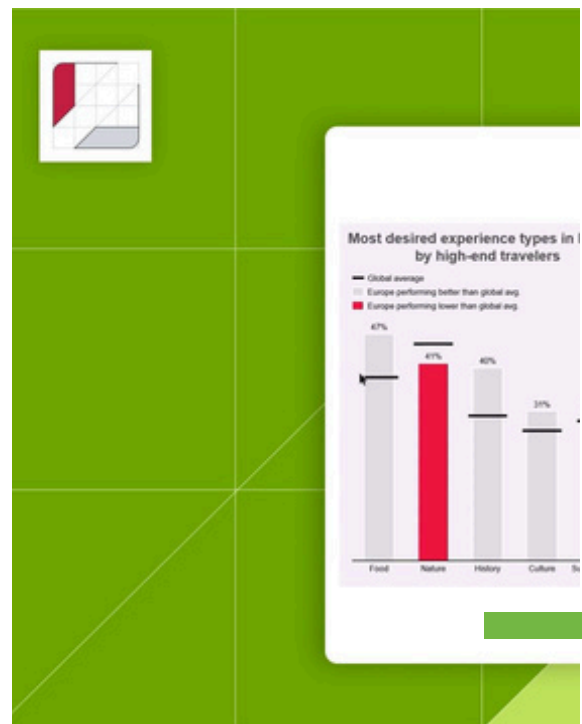
27.09.2025, Barceloneta Beach

The Beach Clean-Up, organized in collaboration with Oikos and Empresa i Societat, brought together students and association members to collect litter along the coast and raise awareness about the impact of plastic pollution on marine ecosystems. The event encouraged reflection on sustainability and collective responsibility, while also serving as an opportunity for participants to connect in an informal, collaborative setting outside the usual academic environment.

### 02. think-cell Enablement Workshop

02.11.2025, Online

This Enablement Workshop, organized in collaboration with our partner think-cell, brought together our consultants to learn how to use one of the most widely used data visualization tools in the consulting industry. think-cell is a PowerPoint add-in that enables the creation of complex, professional charts and slide layouts, a staple in top-tier consulting firms worldwide. The workshop gave members hands-on training to elevate the quality of their project deliverables and prepare them for consulting presentations.



## Events



### 03. Life as a Junior Consultant Panel

19.11.2025, Online

The Life as a Junior Consultant panel brought together Esade alumni currently working at leading firms, including PwC, BCG, Bain, and L.E.K., offering students a firsthand look into the early stages of a consulting career.

Speakers shared how they navigated the transition from university to top consulting roles, highlighting both the challenges and key milestones along the way.

The session focused on providing practical, experience-based insights into what life as a junior consultant really looks like. Panelists also shared tips and strategies to break into the industry, including how to approach applications, prepare for interviews, and stand out as a candidate.

Beyond this, the panel created an open and engaging space for students to ask questions, learn from different perspectives, and better understand what to expect in consulting.



## Events



### 04. 180DC Barcelona x 180DC Milan Spring Summit

07.03.2026, Milan, Italy

180DC Barcelona and Milan came together for an international event designed to strengthen cross-branch collaboration. After two years of working remotely on joint projects, members had the chance to meet in person and build meaningful connections. The centerpiece was a case cracking competition where mixed teams from both branches developed solutions for improving banking access in rural Mexican communities.

The competition was judged by consultants from BCG and Bain & Company, namely Filippo Colombo, Elisa Mancini, and Emmanuel Lo Presti, who also hosted a Q&A on the consulting industry and career development.

The event also featured a keynote speech by Laura Perrotta, a Fundraising Director from Doctors Without Borders, on the challenges of humanitarian fundraising.

Finally, the event concluded with a traditional Italian aperitivo, reinforcing 180DC's identity as a truly international network.



## Events



### 05. NOVA Case Cracking Competition

15.03.2025, Esade Pedralbes

The NOVA Case Cracking Competition, organized by Ennova and 180DC Barcelona, was a one-day consulting sprint designed to challenge students to apply strategic thinking, teamwork, and problem-solving skills to a real business case. The event brought together 10 teams of 4-5 participants who worked intensively throughout the day on a real challenge proposed by Honest Greens related to the development of its B2B catering service.

The case challenged participants to go beyond traditional financial metrics, incorporating sustainability and impact considerations into their strategic recommendations for Honest Greens. After hours of collaborative work, teams presented their solutions to a panel of judges, including Montserrat Diaz, Accounting & Tax Consultancy Specialist and Professor at Esade, and Mariana Zornosa, B2B Intern at Honest Greens, who provided valuable industry insight on the feasibility and impact of their proposals. The event also fostered networking between students and professionals around consulting, sustainability, and purpose-driven business.



## Events



### 06. Barcelona Case Competition

26.03.2026, Fusion Point Esade

The Barcelona Case Competition (2026), was the first inter-university student-led case competition in Barcelona. The BCC brought together top consulting clubs from the city's leading universities and communities: Esade, UPF, UB, TBS, UAB, UIC, IQS, and NextGen. The competition followed a highly selective format, with each participating university nominating its strongest teams of 3-4 members to represent them.

Participants received the case one week in advance so as to ensure the best quality to develop a go-to-market strategy for QualiRate, an early-stage AI startup. At the event, teams presented their solutions to a panel of judges composed of QualiRate (Jenn Nguyen and Nil Agell) and consultants from Deloitte (Daniel Bosque and Laura Profitós).

NextGen took first place, with Esade and UIC finishing second and third. La Salle, NextGen, and UIC also earned team awards for Most Innovative Strategy, Most Visionary Strategy, and Best Team Collaboration, respectively. The day closed with an informal networking session alongside sandwiches courtesy of our sponsor, SandFarcit. This marked the start of what is set to become our growing, annual flagship event.




SAND  
FARCIT

## Events



### 07. IBM Centennial Workshop

**13.04.2026, Graduate Building Esade**

At the IBM Centennial Workshop, hosted in collaboration with Esade Careers, 180DC Barcelona invited three IBM consultants to give an interactive and insightful session focused on understanding both the company and the consulting role within it. The event began with an overview of IBM's history and structure, highlighting key milestones from its 100 years in Spain and providing context on how the organisation operates today.

Participants then gained a deeper understanding of life at IBM as a consultant, with speakers sharing their personal career journeys, day-to-day responsibilities, and the different professional paths available in the firm.

The session concluded with an interactive case workshop, based on a real project developed by IBM with Sevilla FC. This allowed participants to engage directly with a practical business problem, applying consulting thinking in a hands-on setting. The event concluded with informal networking, giving attendees the chance to connect with the IBM professionals and further explore potential career paths.



## Events



### 08. Latin Europe Summit

**18.04.2026, Auditorium Esade**

The Latin Europe Summit, hosted by 180DC Barcelona, brought together four 180 Degrees Consulting branches (UPF, Esade, ESCP, and Turin) for an afternoon focused on strengthening connections across the network. Each branch had the opportunity to present itself, sharing its structure, projects, and what makes it unique. This way, participants were able to better understand the diversity and strengths of the region.

The event was led by the Global Leadership Team (GLT), with João Pires Coelho and Alessandra Cappelletti providing insights into 180 Degrees Consulting at a global level, including its mission, organizational structure, and the broader impact achieved by its branches worldwide. Their contributions helped contextualize the work of each branch within the larger global network.

After this, the GLT organized a workshop structured around topics such as branch handovers, client acquisition, and impact measurement. Participants were divided into groups with members from different branches, encouraging cross-branch collaboration.

Each group discussed how these areas are approached in their respective branches, later sharing insights with the wider group. This exchange allowed for meaningful comparison, learning, and idea-sharing. João and Alessandra further enriched the discussion by offering practical tips, guidelines for improvement, and real challenges and potential solutions based on their experience.





04

**STRATEGIC  
RELATIONS  
DEPARTMENT**

# Strategic Relations Department

Over the past year, the Strategic Relations department played a central role in connecting 180 Degrees Consulting Barcelona with clients and securing projects with real social impact. The department focused on identifying potential leads, managing outreach, preparing project proposals, leading external meetings, and ensuring that each collaboration matched both the client's needs and the branch's consulting capabilities.

During the first term, the client portfolio was mainly focused on Barcelona-based start-ups and innovation-driven organisations. Many of these projects were linked to:

- market research
- go-to-market strategy
- international expansion
- investor readiness
- VC database analysis
- product & business model validation

This showed a strong demand from early-stage and growing organisations looking for structured support before scaling, fundraising, or entering new markets.

In the second term, the department broadened its client base and worked with a more diverse mix of NGOs, social enterprises, international organisations, and impact-driven companies. These clients operated in areas such as:

- social inclusion
- environmental protection
- humanitarian development
- fundraising
- community building
- sustainable energy
- impact measurement.



**Irune Becker**

Strategic Relations Director



**Simon Bahno**

Strategic Relations Director

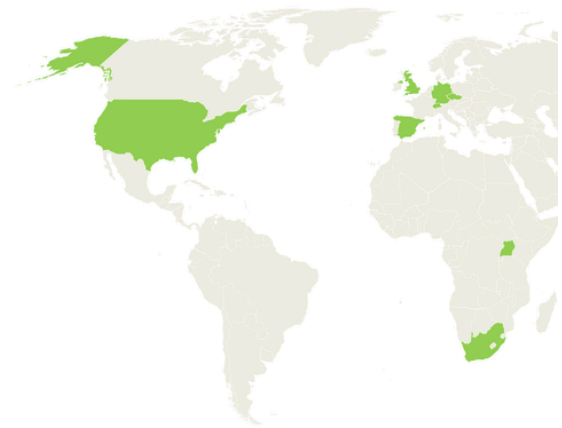
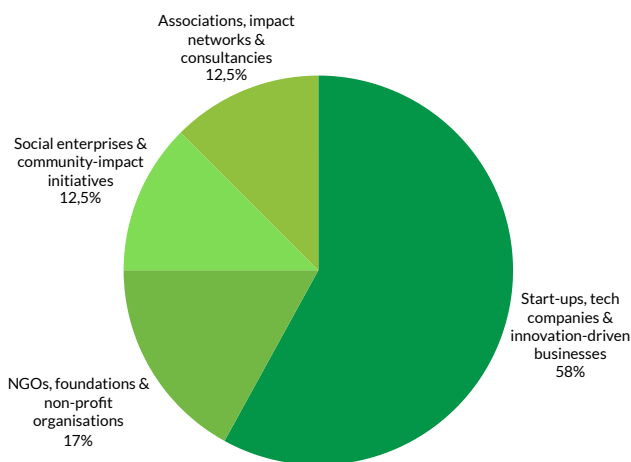
This helped make the project portfolio more varied and international, while still staying closely aligned with 180DC Barcelona’s mission of creating positive social impact.

To build this portfolio, the department used different outreach methods, including cold emailing, LinkedIn outreach, warm introductions, referrals, networking, and direct client meetings. The team also worked on improving external-facing materials such as pitch decks, proposals, project scopes, and follow-up communications. This made client conversations clearer and more professional, and helped ensure that projects were well-defined before being assigned to consulting teams.



Clients were dominated by start-ups, tech, and innovation-driven companies.

Clients came from eight countries in Europe, Africa, and North America.



**David Zürneck**

Strategic Relations Associate



**Ignasi Carol**

Strategic Relations Associate



**Rishabh Kumar**

Strategic Relations Associate



05

**CONSULTING  
DEPARTMENT**



180Degrees  
CONSULTING  
—BARCELONA—

# Consulting Department



**Federico Borgio**  
Consulting Director

**Term 1:** Minday, RuralCore, Qualud

**Term 2:** Confidential [3], Confidential [4]



**Joaquin Mojica**  
Consulting Director

**Term 1:** Team Lead at RuralCore

**Term 2:** Confidential [5], Confidential [6], Confidential [9]



**Paul Piletzky**  
Consulting Director

**Term 1:** Team Lead at Qualud

**Term 2:** People in Need, Bruno Manser Fonds, Confidential [2]



**Jad Abou Elias**  
Previous Consulting Director

**Term 1:** Vulnerable Basket, Movements, Confidential [1]



**Yehor Slychko**  
Previous Consulting Director

**Term 1:** Finboot, Confidential [7], Confidential [8]



# 1 Client Projects Semester 1

## Minday



The main objective was to focus on Minday's position in the digital mental health market and how it could create value when combined with Eholo. The project began with the identification and analysis of the main target groups, both on the consumer side (students, professionals, couples, foreigners, etc.) and on the professional side (psychologists and clinics). This allowed us to clarify the different needs in the market, more particularly the need for flexible, digital solutions and better tools for managing therapy outside of sessions.

Next, the work examined major competitors, such as iFeel, Sanitas, Youper, and TherapyChat, to understand how they operated and to develop a differentiation strategy for Minday. The key insight was that most platforms are either administrative or simple session booking. Minday, on the other hand, adds value by allowing ongoing therapy through content and patient engagement in between sessions.

Another objective was to compare pricing models in the market and assess the impact of Minday's pricing. The deliverable highlights that the price per session was relatively low, making it realistic for professionals to adopt. Finally, the Eholo platform was examined, and revenue forecasts were made to measure the impact of adding Minday.



**Pietro Cecchetti**  
Team Lead



**Anna Herrera**  
Impact Consultant



**Carla Carbonell**  
Impact Consultant



**Thanuj Kumar**  
Impact Consultant



**Theresa Jamhour**  
Impact Consultant

# RuralCore



During the term, the team developed a comprehensive impact strategy framework, partnership mapping, and sustainability narrative for RuralCore. The impact strategy framework was aimed at operationalizing and measuring its triple bottom line across economic, social, and environmental dimensions. This work included defining a set of relevant KPIs, supported by concrete examples, to enable systematic tracking of value creation for key stakeholders, namely farmers, consumers, and the broader industry. To support implementation, the team designed a prototype dashboard illustrating how these KPIs could be visualized within the RuralCore platform. The objective was to translate operational data into actionable insights, enabling intuitive monitoring of impact performance and facilitating data-driven decision-making.

In parallel, a partnership mapping exercise was conducted to identify high-potential collaborators, with a focus on governmental institutions, NGOs, and foundations. For each potential partner, the team outlined collaboration opportunities for specific areas of rural core, key strategic considerations, and a prioritization roadmap to guide RuralCore’s engagement efforts.

Finally, the team developed a structured sustainability narrative to clearly articulate RuralCore’s value proposition. This narrative consolidated the company’s impact across six key pillars: economic, environmental, and social outcomes, as well as benefits for farmers, consumers, and industry stakeholders, providing a coherent and compelling framework for external communication and stakeholder engagement.



**Joaquin Mojica**  
Team Lead



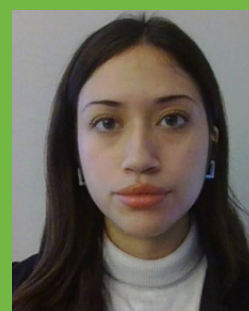
**Alanis Delteil**  
Impact Consultant



**Federico Faccio**  
Impact Consultant



**Aman Semalty**  
Impact Consultant



**Jazmín Simo**  
Impact Consultant

# Qualud



Qualud is a Barcelona-based digital health innovator specializing in the development and deployment of digital health solutions. Seeking to expand beyond its home market, the company engaged 180 Degrees Consulting Barcelona to assess and develop a market entry strategy for two of Europe's most dynamic digital health markets: Italy and Germany.

The project was carried out by a cross-university team of six drawn from both Bocconi University in Milan and Esade Business School in Barcelona. This dual-location setup brought a natural advantage to the project, providing on-the-ground proximity to one of the two target markets from the outset.

The team structured the engagement across several interconnected workstreams: a market assessment of both countries, covering market size, regulatory frameworks, and competitive dynamics; the development of country-specific entry strategies across key dimensions such as geographic focus, target customer segments, and partnership models; and a stakeholder engagement analysis identifying priority institutions, commercial partners, and outreach contacts in each market.

The project concluded with a comprehensive, actionable game plan delivered to Qualud, covering how to position itself, where to enter first, and which stakeholders to prioritize. The client now holds a clear strategic foundation to execute its European expansion, with both Italy and Germany mapped as viable and well-defined entry opportunities.



**Paul Piletzky**  
Team Lead

**Ava Cohen**  
Impact Consultant

**Edoardo Borlandi**  
Impact Consultant

**Angela Paladino**  
Impact Consultant

**Aaryan Kandala**  
Impact Consultant

**Paul Leisten**  
Impact Consultant

# Finboot



Finboot is a tech company that provides supply chain traceability software, helping businesses automate sustainability compliance and track the origin and journey of their products.

During the term, a team of four consultants partnered with Finboot, a UK-headquartered SaaS company specializing in blockchain-powered traceability for complex industrial supply chains. Finboot's core focus is on helping companies in capital-intensive sectors manage their environmental and sustainability data with a high degree of transparency and integrity. Despite having a strong product and working with major global players, the company faced the challenge of navigating a highly crowded and rapidly consolidating market for sustainability platforms.

The consultants focused on delivering extensive market intelligence to help the leadership team make informed decisions about their future growth and financial strategy. The work involved mapping out the competitive landscape and identifying strategic opportunities for mergers, acquisitions, or partnerships. By looking at a variety of different market players, ranging from large-scale assurance providers to specialized software platforms, the team evaluated how Finboot's technology could best complement larger existing ecosystems. Ultimately, the project provided a set of clear, evidence-based recommendations on how to maximize the value of the company's assets through a strategic transaction, thus ensuring that they have a sustainable path forward in an increasingly competitive industry.



**Theodor Hankammer**  
Team Lead



**Ahmed Aldabbagh**  
Impact Consultant



**Mateo Barreda**  
Impact Consultant



**Laura Carolino**  
Consultant

# Vulnerable Basket



Vulnerable Basket is a Ugandan non-profit founded in 2018 with a mission to empower marginalized communities and create equal opportunities for those facing social exclusion. It works to improve the standard of living for vulnerable groups through initiatives spanning healthcare, education, sustainable agriculture, vocational skills, and environmental conservation.

The consulting team spent the term with Vulnerable Basket to enhance its fundraising strategies and outreach methods, with an emphasis on developing easy-to-use tools that the organisation can implement in the future.

The team also developed a Donor Identification Strategy to help Vulnerable Basket prioritise its outreach efforts. This involved categorising potential donors, including foundations, NGOs, and faith organisations, by size and accessibility, identifying outreach channels such as social media, events, and AI-driven data, and building a basic assessment tool to help the organisation target the most relevant and accessible donors.

Alongside the core deliverables, the team supported the creation and launch of Vulnerable Basket's Instagram and LinkedIn accounts. To ensure continuity, a Social Media Strategy document was produced covering a weekly content plan, guidance on imagery, captions, and tone of voice, and practical tips on using tools like Canva and AI for content creation across both platforms.



**Thais Ellmann**  
Team Lead



**Chiara Barberis**  
Impact Consultant



**Eline Cavigniac**  
Impact Consultant



**Euan Reid**  
Impact Consultant

# MOVEMENTS



MOVEMENTS is a Madrid-based online media platform dedicated to turning individual causes into sustainable, large-scale movements. It was founded in December 2025 by Francisco Polo, a former High Commissioner for the Entrepreneurial Nation in Spain, which helps individuals and organisations to create and develop social movements. It offers a comprehensive set of tools (petitions, community building, communication, and fundraising) to turn causes into high-impact initiatives. Through its all-in-one platform, MOVEMENTS empowers people to connect with their purpose and organize collectively to drive meaningful change.

The project focused on developing a market entry strategy for MOVEMENTS to expand into the United States, delivering actionable recommendations on operational structure and efficiency. The team maintained a structured timeline with regular client check-ins, ultimately producing a feasibility study covering physical vs. digital presence options, trademark and taxation implications, and MOVEMENTS' value proposition within a US partnership ecosystem.

Through a detailed analysis, the team recommended a US entry model built on a digital-only presence, leveraging platforms such as Stripe for payments. This was supported by the identification of three distinct revenue streams, over five partnership channels, and a thorough assessment of tax, data protection, and trademark risks.



**Camelia Ion**  
Team Lead



**Hyun Lee**  
Impact Consultant



**Christopher Haddad**  
Impact Consultant



**Ángela Martí**  
Impact Consultant



**Carlota Martí**  
Impact Consultant

# AI Procurement Technology

*Client name withheld for confidentiality [1]*

During the term, the 180DC Barcelona team worked with an early-stage AI startup that helps companies manage public tenders. The client's platform supports teams at every step of the tender process, from finding opportunities to making bid decisions.

The team worked on two main areas: improving the client's sales playbook and building a cold calling guide for niche B2B markets. The consultants looked at how comparable companies in adjacent markets approach sales, and used those findings to shape their recommendations. From this, the team built a six-part sales playbook covering topics such as how to position the client's full product value, how to combine AI with procurement expertise, how to run targeted outbound sales, and how to use partnerships and customer proof to grow.

The team also produced a practical cold-calling guide, giving the client's sales team clear advice on how to find the right contacts, structure conversations, handle objections, and quickly show value. On top of this, a LinkedIn strategy was developed to help the client build credibility with buyers before any sales conversation takes place.

All findings were brought together in a final presentation delivered to the client, giving them a clear and ready-to-use plan for their go-to-market efforts.



**Timur Wittreck**  
Team Lead



**Samir El Jisr**  
Impact Consultant



**Suraj Vora**  
Impact Consultant



**David García**  
Impact Consultant



**Amat Montoto**  
Impact Consultant

# 2 Client Projects Semester 2

## People in Need



This page provides an overview of the consulting project that 180 Degrees Consulting Barcelona completed for People in Need, a Czech humanitarian NGO. The project began at the beginning of March and was completed on the 29th of May 2026, with a final presentation to the client that concluded with a set of future recommendations.

The project was completed to assist People in Need with evaluating three different Asian donor markets: Singapore, Taiwan, and South Korea. Three reports were constructed by 180DC consultants to evaluate the feasibility, appropriateness, and attractiveness of each of the three markets, highlighting the risks and opportunities of entry.

Additionally, a final report and presentation were built to provide a benchmark analysis to compare the markets, providing final scores that were used to finalise a set of recommendations for the organisation in the future.



**Euan Reid**  
Team Lead



**Alessandro Bassi**  
Impact Consultant



**Prune Perra**  
Impact Consultant



**Zelig Rifai**  
Impact Consultant

# Bruno Manser Fonds

**bruno  
manser  
fonds**

fairness im tropenwald

During the term, the consulting team supported the Bruno Manser Fonds, a Swiss NGO focused on rainforest protection and Indigenous rights. The objective was to identify opportunities to strengthen the organisation's donor acquisition and retention strategy, especially for younger donor segments and recurring giving.

The project began with an internal analysis of donor data. The team assessed demographic patterns, donor activity, retention, communication data and geographic concentration. The analysis highlighted structural challenges, including a strong reliance on older donors, low retention among younger groups and limited conversion into recurring support.

In the second phase, the team conducted external research on donor behaviour, fundraising trends and comparable NGOs. The findings informed practical channel recommendations, including an improved donation journey, recurring donation options, impact-based communication, newsletter automation and social media content.

The final part focused on actionable acquisition opportunities, including university partnerships, school fundraising toolkits, film and culture partnerships, corporate matching, tangible impact campaigns and regional expansion. Each opportunity was evaluated using structured criteria and practical implementation considerations to assess its relevance and potential impact for the organisation.



**Nastasia Pasichnyk**

Team Lead



**Mathis Stanitzke**

Impact Consultant



**Constantin Béliard**

Impact Consultant



**Thanuj Kumar**

Impact Consultant

# Education and Skills-Focused Nonprofit

*Client name withheld for confidentiality [2]*

During the term, the 180 Degrees Consulting team supported a foundation in building the communications and funding infrastructure it had lacked. The team addressed two parallel challenges: establishing a credible digital presence from scratch, and developing a realistic strategy for securing sustainable funding within the local nonprofit landscape.

On the digital side, the team identified a major platform's nonprofit programme as the highest-leverage zero-cost starting point, given the client's existing nonprofit registration and limited technical capacity. A channel-specific social media strategy was also developed, mapping each major platform to a distinct audience: community engagement, donor credibility, and youth storytelling. On the funding side, the team produced a detailed mapping of local funding sources: government bodies, sector training authorities, municipal grants, private foundations, and corporate social investment programmes. Each source was assessed for eligibility requirements, grant sizes, application processes, and strategic fit, and was prioritised to guide the client's outreach efforts.

All deliverables were produced with cost-consciousness and implementation feasibility at the forefront, in line with the founder's belief that children should be empowered through skills rather than depend solely on donations. The team also curated a set of accessible training resources tailored to the client's level, covering social media management and nonprofit communications, and developed a structured content framework and an overarching digital roadmap, giving the client a clear sequence of steps to begin execution independently.



**Philipp Masia-Westhoff**  
Team Lead



**Giovanni Donato**  
Impact Consultant



**Aman Semalty**  
Senior Consultant

# Social Sustainability Consulting

*Client name withheld for confidentiality [3]*

The 180 Degrees Consulting team partnered with a boutique social sustainability consultancy, drawing on deep founder expertise from outside the European market, to design a structured European expansion strategy and an accompanying communication framework.

The team began by assessing the client's current positioning and mapped three major regulatory compliance pressure points binding on EU private companies by 2027 (the Pay Transparency Directive, the Women on Boards Directive, and the CSRD/ESRS social pillar), identifying where the client's existing capabilities represent a defensible and differentiated offer against larger incumbents.

For the private-sector track, the team developed a five-wedge prioritisation framework and produced a targeted prospect list of high-fit companies in the priority entry market, selected through a three-database targeting architecture combining UN Global Compact participation data, B-Corp certification status, and planning-to-engage signals. For the public-sector and NGO track, the team mapped an ecosystem-based indirect-access model leveraging the client's existing institutional relationships in the priority market, with a phased expansion roadmap toward additional European geographies.

On the communication side, the team designed a full positioning shift, from broad social-impact language toward specialist implementation language, anchored in five communication pillars and two defensible differentiators: non-European field delivery capability and co-creation methodology.



**Federico Faccio**  
Team Lead



**Alanis Delteil**  
Senior Consultant



**Samir El Jisr**  
Senior Consultant



**Nicola Hyzyk**  
Impact Consultant



**Jules Mulbert**  
Impact Consultant

# Residential Clean Energy

*Client name withheld for confidentiality [4]*

This term, the team advised a pre-market Spanish energy startup developing a residential electricity-generating home appliance designed to reduce household dependence on the grid. The engagement spanned four interconnected workstreams: business model assessment and scenario analysis, a phased go-to-market strategy, a competitive landscape and positioning framework, and a three-year strategic roadmap with supporting investor materials.

The analysis was grounded in primary official sources covering national energy, statistical, and regulatory data, producing a robust market sizing model covering TAM, SAM, and SOM for the Spanish residential energy sector. The team also mapped the full competitive landscape against solar PV, battery storage, and alternative generation technologies, developing a positioning framework centred on the multi-family, renter, and solar-constrained household segments.

On the financial side, the consultants built unit economics models including payback sensitivity analysis across household energy spend scenarios, and stress-tested a slower adoption scenario to assess business model resilience. A key output was a disciplined go-to-market recommendation structured around a validation-first approach: securing independent laboratory certification as the critical prerequisite before retailer or distribution scale-up.



**Gustavo Terrádez**  
Team Lead



**Navya Bajaj**  
Impact Consultant



**Laura Carolino**  
Impact Consultant



**David García**  
Senior Consultant

# Fundraising and Philanthropy Association

*Client name withheld for confidentiality [5]*

Over the past six months, the team of consultants at 180 Degrees Consulting has advised a professional association for individuals working in fundraising and philanthropy on the development of its short and medium-term strategy.

The work carried out by the team consisted of conducting an initial analysis of the client's situation, carrying out a benchmarking analysis of its main 'competitors' (other organisations providing similar services), an analysis of the market in general, and a value proposition defined by the concentric segmentation of the client's potential customers.

Based on this initial approach, the team of consultants was able to develop a rebranding plan for the client, as well as a redesign of the business model, offering a fresh perspective on the professionalisation of fundraising, potential growth phases, and a roadmap detailing these phases, along with a proposal for diversifying revenue streams based on the expansion of services tailored to potential and diverse target audiences.

In a later phase of the project, the scope of the strategy focused on defining the membership models in greater detail, addressing key issues such as the client's governance and structure, and finally creating an interactive Excel model to provide tools for forecasting future cash flows (taking into account the new service proposal). The team also developed a set of specific guidelines for the functioning of the board and members of the organisation.



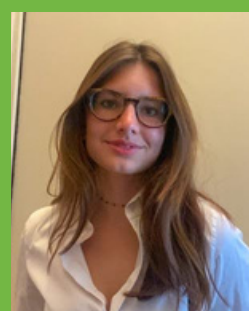
**Camelia Ion**  
Team Lead



**Hyun Lee**  
Senior Consultant



**Christopher Haddad**



**Francesca Aimone**  
Impact Consultant

# Compliance and Whistleblowing Technology

*Client name withheld for confidentiality [6]*

This term, the group developed a strategic market expansion project for a compliance and whistleblowing management platform, in order to determine the potential for growth into Latin American markets. The project was dedicated to an in-depth go-to-market analysis across several countries, covering market attractiveness, regulatory mechanisms, competition, customer segments, barriers to entry, and market feasibility.

One of the main challenges was researching the compliance environment in each country, including the legal and regulatory aspects that could facilitate the implementation of whistleblowing channels and internal reporting systems. The team reviewed local laws governing corporate compliance, anti-corruption, corporate governance and whistleblower protection to gauge the extent to which regulation could shape demand. In parallel, the team ran a detailed competitive analysis covering both international and local players, assessing market saturation, opportunities for differentiation, and the client's competitive position. Commercial dynamics were also explored, including willingness to pay, target customer profiles, sales complexity, cultural barriers, and adoption risk.

From this research, the team produced country-specific recommendations on whether and when the client should enter each market. A clear insight was that local credibility and trust are key in the compliance industry, so the team identified potential strategic partners, such as law firms, compliance consultancies, and HR organisations, as the fastest route to decision-makers.



**Thais Ellmann**  
Team Lead



**Ángela Martín**  
Impact Consultant



**Martina Domingo**  
Impact Consultant



**Lucia Vallamora**  
Impact Consultant

# Three Projects Excluded for Confidentiality

## Mergers & Acquisitions Project

*Confidential [7]*



**Marcos del Cura**  
Team Lead



**Florian Akermann**  
Impact Consultant



**Dani Sana**  
Impact Consultant



**Navya Bajaj**  
Impact Consultant



**Kevin Horst**  
Impact Consultant

## Expansion Project

*Confidential [8]*



**Lise Plou**  
Team Lead



**Francesca Aimone**  
Impact Consultant



**Martina Domingo**  
Impact Consultant



**Louy Ejel**  
Impact Consultant

## Performance Data Analysis

*Confidential [9]*



**Marcos del Cura**  
Team Lead



**Carla Carbonell**  
Impact Consultant



**Carla Bach**  
Impact Consultant



**Anna Herrera**  
Impact Consultant



06

# ANALYTICS DEPARTMENT



180Degrees  
CONSULTING  
—BARCELONA—

# Analytics Department



**Jan Sternberg**  
Analytics Director

**Term 1:** LongevLab, MiWendo, Valumia, Vulnerable Basket

**Term 2:** Confidential [10], Value Balancing Alliance, Confidential [11]

**Term 2:** Business Intelligence



# Business Intelligence

**This Annual Report was written by the Business Intelligence Team.**

As part of the Analytics department, the team was responsible for managing and overseeing the association's internal data infrastructure, ensuring that key performance indicators were consistently tracked and reported across all departments. This included developing standardized frameworks for measuring operational efficiency, client satisfaction, and member engagement, providing leadership with the actionable insights needed to drive informed decision-making throughout the year.

Beyond internal reporting, the Analytics team played a central role in evaluating the overall health and performance of the association by synthesizing data from client projects, member feedback, and departmental activity. Through continuous monitoring and analysis, the team identified areas for improvement and contributed directly to the strategic development of 180DC Barcelona, laying the groundwork for a more data-driven and results-oriented organization in the years ahead.

Highlighted numbers from client feedback:

**4,5/5**

Client satisfaction  
with deliverables

**89%**

Client likelihood of  
recommending 180DC

**4,9/5**

Client rating of teams'  
responsiveness

**91%**

Client rating of  
expectations met



**Moosa Khokher**  
Analytics Associate



**Mohamad Fattal**  
Analytics Associate

# 1 Projects Semester 1

## LongevLab



LongevLab is a health-tech startup that provides advanced health analytics without requiring a subscription, enabling users to gain deep, actionable insights into their health data while seamlessly integrating with any wearable device they already own. The company wanted to become more competitive and better known, so our team helped them build an AI automated tool that engages with people online on social media to promote their product. First, we identified a set of distinct user archetypes to better understand the different needs, behaviors, and motivations within LongevLab's target audience.

These archetypes allowed us to segment users based on how they interact with health data and wearable technology, highlighting variations in engagement levels, goals, and expectations. This structured segmentation helped ensure that both the analytics and product features can be tailored to deliver more relevant, personalized insights to each user group. Then, we developed an n8n automated workflow to support user engagement on X. The workflow is powered by OpenAI's ChatGPT in the backend, enabling dynamic, context-aware responses and personalized interactions. It is connected to the client's Telegram account, allowing them to manage, approve, and control automated messages directly from their phone. All interactions and workflow activities are logged in a Google Sheet, creating a clear record for tracking, monitoring, and future optimization.



**Ralph Atme**  
Team Lead



**Lara Isikci**  
Analytics Consultant



**Alex Schumacher**  
Analytics Consultant

# MiWendo



The 180DC team partnered with the startup to develop a comprehensive investor targeting strategy for their upcoming seed funding round. The core objective of this project was to identify and evaluate relevant venture capital firms across Germany, the United States, and Spain. This research was designed to provide the Vendor executive team with a curated pipeline, enabling them to efficiently contact the right investors suited to fund their specific niche.

To build this targeted database and actionable pitching guide, the consulting team employed a hybrid methodology that combined technical data gathering with qualitative research. Initially, the team utilized Python web scraping techniques to rapidly aggregate extensive data on active venture capital firms operating within the target regions.

Following this automated extraction, rigorous manual research was conducted to evaluate each firm's portfolio alignment, recent fund activity, and specific partner interests. Furthermore, the team reached out directly to the founders of successful startups within the same sector. This primary research was crucial for gathering first-hand intelligence on how these successful founders structured their narratives and presented their ideas to secure their own seed rounds.

The final deliverable provided MiWendo with a structured action plan and a comprehensive database, accompanied by clear instructions for the execution phase.



**Mara Rösen**  
Team Lead



**Sebastian Aguilera**  
Analytics Consultant



**P. Pongtanya**  
Analytics Consultant



**Nicolas Castro**  
Analytics Consultant



**Sivaraam Karthik**  
Analytics Consultant

# Valumia



This team developed a solution to help Valumia, a climate technology company, monitor supply chain risk through real-time global media coverage. By providing real-time insights into potential risk factors associated with supply chains, we replaced the need for manual tracking and made it easier and more automated to identify potential disruptions.

The team has built a backend pipeline that ingests news data from around the world, filters it down to relevant events, and provides the necessary information that is contained within the articles. Because media can be published in many different languages and formats, the extracted data was translated and processed so that it can be easily evaluated. The pipeline analyzes news items to categorize them as either environmental, social, or governance risk events, assess their severity, and predict the effect(s) on supply chain operations. The purpose of this process is to take an unstructured source of information (news, in this instance) and make it a more useful and actionable source of information. The team made sure the system they built was usable and practical, instead of making it incredibly complex. Part of this was ensuring the entire process for news works from start to finish, i.e., fetching news through to providing structured output that could be understood by the client.

By the end of the project, the team delivered a working prototype that demonstrates how real-time risk monitoring can be completed in a more automatic and scalable manner. The client will be able to use this prototype as the basis for developing additional features such as improved accuracy, storage & visualisation capabilities with their solution.



**Aswini Kumar**  
Team Lead



**Maryeme Idiata**  
Analytics Consultant



**Jad Zoghaib**  
Analytics Consultant



**Sharath Raveendran**  
Analytics Consultant

# Vulnerable Basket



The Ugandan NGO appears twice in this report, once for the Impact Consultants and once for the Analytics Consultants. The reason is that Vulnerable Basket's fundraising strategy needed fundamental support: the NGO's website had to become more attractive to investors and donors alike. Changes to the branding, customer journey, and donation payment pages all had to be completed in parallel, which is why the Impact Team partnered with the Analytics Team to tackle the challenge together.

The restructuring of the website started with rethinking the overarching theme so the branding of the NGO would come across as clearer and more consistent across every page. Next, the experience as a donor had to be improved through precise donation explanations, aligned donation amounts across all causes, and a fix to a bug in the link to the payment provider, all of which reduce friction at the moment of giving. In addition, the financial reports stating previous donations have been polished and are now more visually appealing, helping build transparency and trust with prospective investors. Several supporting pages that elaborate on the NGO and its purpose have also been reworked, so that visitors arriving from different channels reach content that is consistent in tone and message.



**Aleksandra Dzurak**  
Analytics Consultant



**Ayush Raj**  
Analytics Consultant

# 2 Client Projects Semester 2

## Community Wellness

*Client name withheld for confidentiality [10]*

During the term, the 180 Degrees Consulting team partnered with a community-focused wellness group to develop a community app for their members. The client's core challenge was fragmented communication and low engagement, as most interactions happened only during in-person events or through newsletters, making it difficult to scale the community without losing its warmth.

To deliver this, the consulting team combined product strategy with technical development, working closely with the client's leadership to define the app architecture and prioritise features for Version 1. The technical foundation included a managed backend and database, a member matching feature based on shared interests and neighbourhood, and a payments integration for event booking and recurring membership subscriptions.

The consulting team also introduced an achievements system to deepen engagement and boost community morale. Each achievement is tied directly to event participation, rewarding members for attending events, bringing friends, engaging in the community chat, and staying active over time.

The final deliverable provides the client with a complete working codebase, a fully configured database, payment flows, and a management dashboard that allows the client to publish events directly to the app without technical involvement.



**Sivaraam Karthikeyan**  
Team Lead



**Maryeme Idiata**  
Analytics Consultant



**Lara Isikci**  
Analytics Consultant

# Value Balancing Alliance



Value Balancing Alliance (VBA) is a non-profit alliance of large international companies that works on making the social and environmental impact of business activities measurable in financial terms. Its goal is to help companies and decision-makers see the full environmental and social effects of their work, not just their financial results.

The main problem VBA was facing was that a lot of its data on sustainability accounting standards was spread across several different Excel sheets. These sheets did not communicate with each other, which made it hard for VBA's clients to actually use the data and submit information in a clear way. The team was asked to bring all of these siloed spreadsheets together into one simple and user-friendly spreadsheet that VBA's clients could easily interact with to submit their own data.

To do this, the team first gathered all of the existing data and spent time making sense of it, understanding how the different processes worked and how information was supposed to flow between them. From there, they built the new spreadsheet, starting with a master data tab and an input data tab, which feed directly into a dashboard tab. The dashboards on this tab are fully interactive and adjust automatically based on whatever data is entered, giving clients a clear and simple way to view their results. Finally, the team presented the tool to the client using a case study on a sample company, to ensure all stakeholders were aligned on how it works and how it should be used going forward.



**Jad Zoghaib**  
Team Lead



**Aleksandra Dzurak**  
Analytics Consultant



**Alex Schumacher**  
Analytics Consultant



**Nicolas Skonieczny**  
Analytics Consultant

# Energy Retail

*Client name withheld for confidentiality [11]*

During this term, the team worked with a relatively small energy company that aims to become more competitive in energy pricing. The team helped address this challenge by developing a forecasting tool to predict future energy prices, allowing the client to plan accordingly, submit more competitive bids, and ultimately increase its revenues.

To address this challenge, the team worked on several tasks through an iterative process. First, they researched the factors that affect energy price fluctuations, which range from weather conditions and geopolitical events to gas prices and many other variables. After identifying all relevant factors, the team selected the major ones that would have the greatest impact to reduce the overall complexity of the project. Following this selection process, they gathered historical data from online sources for each of the chosen variables, which was then used to train machine learning models. The team started with a linear regression model to establish a benchmark for the prediction tool and then refined the model by properly cleaning the data, removing anomalies, and incorporating more reliable datasets. After establishing a promising benchmark, they trained more advanced models, including time series and machine learning approaches, and assessed their performance to identify the most accurate solution.

In parallel, the team built a dashboard that served as the user interface for the client. The dashboard allows users to visualise key factors, explore predicted prices, and experiment with different variables to create scenarios and support planning decisions. It is linked to the outputs of the machine learning models and constitutes the main product delivered to the client.



**Ralph Atme**  
Team Lead



**Ayush Raj**  
Analytics Consultant



**Sharath Raveendran**  
Analytics Consultant



07

# MARKETING DEPARTMENT

# Marketing Department

This year, the Marketing Department played a key role in strengthening the visibility and impact of 180DC Barcelona, covering initiatives spanning events, social media, and brand communications to maintain a strong presence within the Esade community and beyond.

For the Barcelona Case Competition, the team designed a promotional plan targeting students across multiple universities, raising awareness of 180DC as a leading student consulting association and establishing the event as its first flagship competition. In addition, the marketing team supported the Latin Europe Summit, a pan-European 180DC gathering held in Barcelona, through cohesive branding and media plans that managed sponsor communications and produced materials reflecting both the event's mission and the association's professional image.

The marketing team also drove visibility for two key events: the IBM Spain Centennial Session and Case Workshop, promoted through Instagram stories, posts, and targeted messaging, and the beach clean-up initiative in partnership with aligned associations. The team also supported the Esade Associations Fair and recruitment campaign to attract prospective members.

Throughout the year, the team also maintained a consistent presence across Instagram and LinkedIn, producing original content aligned with the association's identity and values, while keeping the official website current with the latest news and events.

**108,000+**

Total views

**10,000+**

Accounts reached

**▲ 750+**

Interactions



**Ana Jaimes**

Marketing Director



**Iga Ciepat**

Marketing Associate



**Zoe Papadias**

Marketing Associate



08

**FINANCE &  
LEGAL  
DEPARTMENT**



180Degrees  
CONSULTING  
—BARCELONA—

# Finance & Legal Department

This year, the Finance & Legal team focused on strengthening the association's internal foundations. This involved updating volunteer agreements for members, drafting non-disclosure agreements (NDAs) and client service agreements, and implementing detailed budget planning for various events and initiatives.

We also increased our YoY budget by 50% through donations and partnerships. These efforts created a more structured and sustainable financial framework for future operations.

The team also built the association's first sponsorship network by identifying and reaching out to potential corporate partners both within and outside Esade. For our flagship event, the Barcelona Case Competition, the team secured a strong sponsor, SandFarcit, which provided food and drinks throughout the evening. While still in early stages, this initiative aims to create sustainable funding and collaboration opportunities for future growth.

Lastly, the department facilitated all of the processes involved with the management of available finances, including managing our internal balance sheet. The work carried out provides a strong and solid operational base for the strategic future of the Finance & Legal Department.



**Krish Mohanani**

Finance & Legal Director



**Martin Perez**

Finance & Legal Associate



**Marius Berrocal**

Finance & Legal Associate



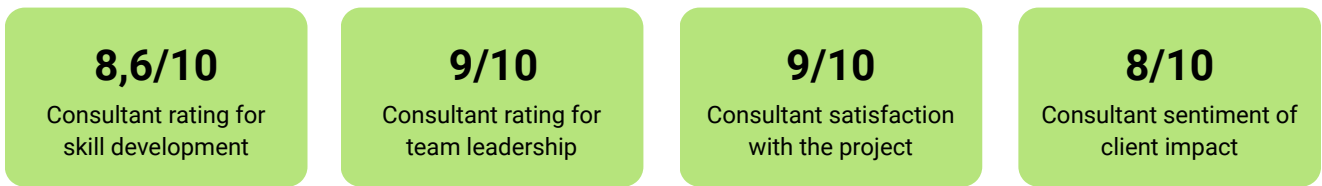
09

**SHAPING  
TOMORROW**

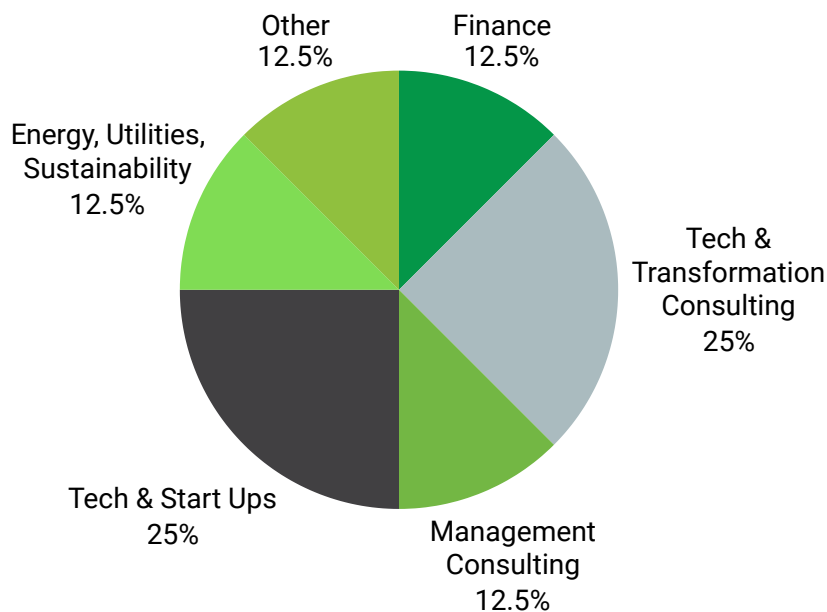


180Degrees  
CONSULTING  
—BARCELONA—

# Member Satisfaction and Placements



As a consulting association, 180DC Barcelona aims to be a launching pad for its members' careers. Across the two terms, the Business Intelligence Team measured and monitored closely the professional skills the members wished to improve, as well as their job offers. Below shows prominent industries for this year's cohort's job landings.



**+26%**

self-rated growth in consulting-related skills

**+10%**

leadership improvement after term one feedback

# Client Testimonials



Dear Team,

I would like to sincerely thank you for the time, expertise, and dedication you contributed to our project. Your support in helping us develop our sustainability policy and strategic partnerships framework has been truly valuable.

We deeply appreciate your generosity and commitment to supporting our mission. It has been a privilege to work with such a thoughtful and professional group of consultants.

Thank you again for your contribution and for believing in this project.

**RuralCore**

We can't be happier! Somehow, 180 Degrees manages to consistently curate an incredibly motivated group of young professionals. We had the best experience working with motivated people, true problem-solvers, and just genuinely nice individuals. Thank you!

**Valumia**

Working with 180 Degrees Consulting Barcelona has been an absolute game-changer for Vulnerable Basket. Their insightful guidance and strategic approach have propelled our charitable organization towards success in ways we never thought possible, from improving our visibility, redesigning and improving our website, restructuring our processes, to devising innovative, sustainable growth strategies. The expertise and commitment to delivering results have been invaluable to us. 180 Degrees Consulting consistently demonstrates professionalism, reliability, and a strong sense of partnership by always being available to provide clear and timely clarifications.

180 Degrees Consulting Barcelona has an excellent team of professionals in making who have the ability to understand the national non-governmental organization context and provide exceptional guidance throughout each stage of organizational development processes. Your organizational development knowledge helped us develop the KPI & content plan, and launch donor/internal dashboards.

**Vulnerable Basket**

The team provided a highly impressive level of detail in its search for VCs whose investment theses aligned with MiWendo's project and stage. They did not limit themselves to a high-level search; rather, they developed specific search mechanisms and documentation standardization protocols that enabled them to be exceptionally efficient in their pursuit of capital.

**MiWendo**

# Client Testimonials



Our collaboration with Ralph, Ayush, and Sharath from Esade Business School has exceeded our expectations. They were asked to develop a short-term forecasting model for electricity wholesale prices that proved both practical and valuable. Throughout the project, the team demonstrated a strong work ethic, professionalism, and seamless coordination. They maintained close communication, presented deliverables clearly, and showed a consistent willingness to incorporate feedback, ensuring that the final outcomes were as robust and useful as possible. I strongly recommend collaborating with 180 Degrees Consulting. Organizations stand to gain significant value from such partnerships while benefiting from the dedication, insight, and trustworthiness of highly capable and motivated students.

**Energia Viva**

At MARPEL ENERGÍA S.L., we are very satisfied with the work carried out by the team at 180 Degrees Consulting Barcelona. From the very beginning, they demonstrated interest, approachability, professionalism, and a strong ability to understand MARPEL's vision. The work carried out has been excellent. We have received serious, structured, and very useful support, with valuable insights that help us see more clearly the aspects critical to MARPEL's growth and positioning. We would like to extend special thanks to Gustavo, as the team leader, and also to Federico, David, Laura, and Navia. For us, it has been a very positive experience, both professionally and personally.

**Marpel**  
[Translated from Spanish]

They have fully understood our needs, and the information they provided is extremely helpful for a company like ours.

**BCN Resol**

The 180's team is simply the best! The attention, the detail, everything! Would recommend it to anyone.

**Centro Sarana**

The volunteers from 180DC/ESADE were a pleasure to work with. They consistently asked thoughtful questions and showed real curiosity about the work, often suggesting fresh ideas of their own. They approached the task with diligence and care and delivered work that met our expectations.

**Value Balancing Alliance**



# Letter from the Incoming President

Dear 180 Degrees Consulting Barcelona Community,

As I step into the role of President of 180 Degrees Consulting Barcelona, I am proud to represent a branch built on a simple but powerful belief: that talented students can help organizations address important challenges while contributing to lasting social impact.



180 Degrees Consulting Barcelona brings together motivated students, mission-driven organizations, and partners who believe in using consulting as a tool for meaningful change. Through our consulting and analytics projects, we aim to provide clients with fresh perspectives, structured problem-solving, and practical recommendations that support stronger decisions and outcomes.

Looking ahead, our focus will remain on delivering meaningful value to the organizations we serve. We will continue approaching each project with professionalism, curiosity, and care, while seeking to expand our collaborations with organizations working across social impact, sustainability, and community development. Our aim is to ensure that our work is thoughtful, practical, and relevant to our clients' objectives.

To our clients and partners: thank you for trusting us and for allowing our teams to contribute to your work. To our outgoing Board and consultants: thank you for the dedication, energy, and commitment that continue to shape this branch.

I am excited for the year ahead and confident that 180DC Barcelona will continue building on this foundation as a trusted, professional, and impact-driven consulting organization.

With appreciation,

**Krish Mohanani**

**Incoming President, 180 Degrees Consulting Barcelona**

# Thank you!

The Barcelona branch would like to thank its members, clients, collaborators, and sponsors for an incredible 2025-2026. We are proud of what this year has brought, from the projects delivered to the community built around them. With that momentum behind us, we are already looking ahead to the next chapter.

## Contact Information:



**Mail**

[barcelona@180dc.org](mailto:barcelona@180dc.org)



**Website**

[180dcbarcelona.com](http://180dcbarcelona.com)

